



PEB Exchange, Programme on Educational Building 2008/15

Dalry Primary – An  
Innovative Scottish Case  
Study

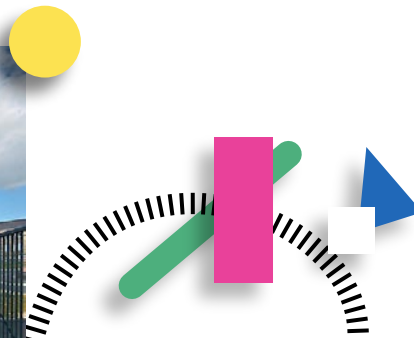
**Malcolm Summers**

<https://dx.doi.org/10.1787/234238681157>

# Dalry Primary – An Innovative Scottish Case Study

By Malcolm Summers, Scottish Government, United Kingdom

*In presenting this case study of an innovative school building in Scotland, the author describes its unique design features, conveys the viewpoints of the users, client and design team, and reveals the lessons learned.*

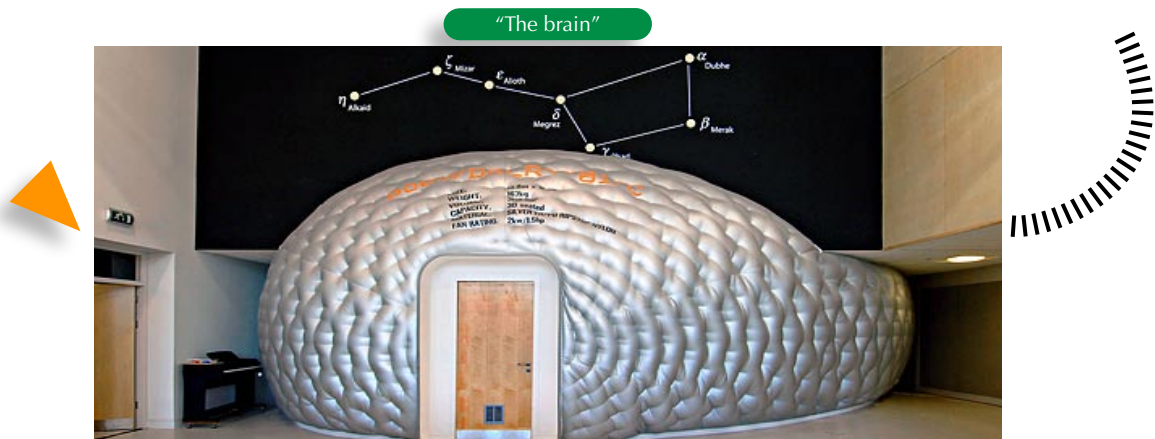


Dalry Primary, North Ayrshire

## INTRODUCTION

Dalry Primary School in North Ayrshire is the latest case study featured on the Scottish Government's website. By April 2009, the website will provide 32 case studies of recently completed nursery, primary and secondary school buildings in Scotland. The purpose is to highlight good practice and demonstrate different approaches to school design issues to help inform local authorities and others involved in the planning, briefing and design of school estate projects.

Dalry Primary is a unique project involving the close collaboration of artists, architects and the county's council in designing and realising a new concept in primary school building. The whole school is designed as a learning prototype, offering multiple opportunities to engage with different organisational and teaching methods, utilising or modifying the facilities and spaces. It does not impose directions or solutions, but offers them as options.



## DESIGN FEATURES

North Ayrshire Council aimed to create a new language of learning projects, ideas, concepts and data through the fabric of the new school building. The architecture is developed through a “geometry of information”: routes tell stories, layout suggests systems of measurement, and specific spatial relationships inform about the local and global environment. Facts, figures, phrases and fables have been incorporated into the structure with historical “site specific” text and information.

In reference to the vernacular architecture of North Ayrshire, the external fabric is predominantly white with black highlighted openings and features. Closer to, and particularly when viewing into or through the building, individual features of anomalous shape and colour indicate the internal detail. It is a building designed as an educational instrument, offering richness and excitement from the inside looking out.



The design places particular importance on the 14 class bases which act as “home bases” for each class’s general activities: these are themed classrooms, each containing unique features and instruments. This layout enhances a feeling of belonging and offers an exciting backdrop for learning.

### Special purpose houses

The school is conceived as a collection of houses. Each house is ascribed a particular function or thematic description, which suggests patterns of use and occupancy.

The **Environmental House** rises up through the building, and where it intrudes through the roof it takes on the role of observatory designed to monitor and interact with the natural environment.

The **Data House** (popularly know by pupils as “the brain”) contains the school’s information and communications technology needs and resources in one purpose-built space, conceived by the artist as a crash-landed spaceship.

The **Book House** (library) is linked on a Pythagorean axis to the data house and explores the architecture of complex geometry.



ICT facilities



The "Book House"

The **Art House** is a studio space dedicated to the Arts. The interior is fitted out in robust materials able to withstand the rigours of school life. This space is not intended to be precious but to serve for experimentation.

The **Fitness House** is a well-equipped fitness room, specifically designed for children under 16 years. It provides an environment in which pupils can focus on preparation for physical activity and learn how their bodies perform.

### Sports hall/auditorium

A high level of community use was planned for the sports hall/auditorium, resulting in the provision of facilities at Dalry Primary that in the past would not have been justified. The sports hall has been designed to accommodate international competition-standard events.

The design is inclusive, with features suitable for the pupils and, outside school hours, the wider community. As these spaces have a number of uses and users, flexibility is essential. Retractable seating located within the sports hall/auditorium accommodates an audience of 264 people, combined with a permanent tiered viewing area located at the first floor, which raises the number to 496. This arrangement allows the space to be used for a wider range of functions including full school assemblies, theatre, dance, conferences, lectures, business events, film showings, concerts, conferences and sporting events.



Sports hall/auditorium

An innovative solution to the storage requirements of loose sports equipment was to include three underground retractable platforms with mesh walls, the roof of which can be utilised as a raised stage. Situated on the northern external wall, these units can be operated at the control panel situated in the recessed housing adjacent to each unit or by remote control.

### Restaurant

The double height restaurant is located within the main entrance to the school and is overlooked by the entrance gallery. The north facing wall benefits from natural daylight from full-height glazing arranged in a bar code pattern, the top section incorporating artwork designed to read “Dalry Primary School”.

The location of the restaurant was chosen to encourage use as an extension of the activity area, class base area and library area. The surfaces and space are designed to allow children to take resources and books to continue work in an alternative area. This arrangement permits the space to be used for a wider range of functions, from an informal meeting space to community use outside school hours, to chess tournaments and aerobic activities undertaken with other schools.

### Materials

A number of materials were employed to present a variety of textures – insulated metal panels, render, roughcast glazed brick and facing brick. To add warmth and visual interest, metallic gold insulated panels together with cedar lining were introduced.

4

Internal walls are predominately stud partitions finished in a variety of materials offering a stimulating and visually rich interior. Floor coverings are a mix of vinyl (safety vinyl in general areas) with carpet in offices. A steel polyester powder coated trapezoidal insulated roof panel covers the building. The external fabric is conceived as an educational instrument, panels sized to allow the building to be used as an instrument of measure and a teaching aid.

External materials



## VIEWPOINTS

### Users' perspective

Dalry Primary's concepts and designs were not arrived at arbitrarily; the school community was a key part of the design process. Extended workshops were organised with pupils, staff and consultants using drama, visual arts, film, and discussion to explore how existing spaces were used, what accommodation the school should contain and how it would work. During the workshops, pupils had clear ideas on areas that are particularly important to them, focusing on toilets and spaces within which to socialise, as well as colour, shape and even sounds of the school environment.

Pupils have been pleased with the building since it opened in August 2007. While acknowledging the improvements made on more fundamental things such as the individual toilets and access to individual lockers, pupils also enjoy the innovative and unusual parts of the school like the soft, tactile balloon material which forms "the brain".

"The brain" is one of their favourite spaces, along with the library area and the sports facilities. Physical education should be adventurous and engaging, and children at Dalry show expressions of joy, adventure and achievement when using their sports facilities.

The pupils like the reposition of the new school adjacent to the new nursery, permitting them to see their younger brothers and sisters in the playground during breaktimes. Many pupils are also fond of the outside garden, which gives panoramic views of the surrounding areas and allows the freedom to learn outdoors.

The teachers especially appreciate the breakout spaces outside the class bases that can be used for project work or quiet time with pupils.

### Client's perspective

The aim of the project was to transcend accepted functionality and to stimulate the child's imagination. It was therefore necessary to reasonably question every aspect currently employed in school design and to state or restate the true aims and purposes of a primary school. To this end the concept of imbedded intelligence was adopted.

Imbedded intelligence refers to the implicit information that any structure contains: weight, material, construction, power requirements, etc. This information is made visible through a variety of means, and whilst it may not lead to an instant understanding of how and why the built form has been fabricated in such a way, it is available as a learning/teaching aid.

Other ideas or thoughts are superimposed on the fabric in the form of text, numbers, colour, form, geometry and texture. Thus architecture as a learning resource illustrates philosophies, theories and ideas, and inspires curiosity.

### Design team's perspective

The architect and artist on the design team were given latitude to work within and expand upon the themes provided by the client, to present ideas and explore the possibilities of a new architecture of learning.

As witnessed at Dalry (and other North Ayrshire projects at Beith, Lawthorn and Mayfield Primary Schools), the decorative impact of art can have far-reaching consequences and rapidly become an integral element in a project.

Art and architecture are different. It is this difference that creates ideas, while trying to smooth the difference results in blandness. Artists discover the nature of the work in making it. In architecture the work has to formalise fairly early on in the design process. Artists respond to architectural spaces every time they install work or enter into a dialogue relating to context; architects benefit too.



View of “the brain” from corridor

Semi-open plan with shared breakout space



## LESSONS LEARNED

North Ayrshire Council stress the importance of risk-taking without accepting failure, and to learn from mistakes.

What lessons have been learned from the collaboration between artists and architects, and what should they bear in mind when embarking on future ventures?

- Artists and architects should collaborate from the inception of the project. Only then will the structure and artwork mesh organically.
- It is important that original ideas are never compromised, and if the logistics of the project are thrashed out at an early stage then this can be avoided.
- Concern exists over the quality of the artists' involvement, as their work tends to be carried out in isolation. In addition many contractors tend to find some of the specifications bizarre when presented with a medium in which they are unfamiliar.
- Artwork needs to be installed at the same time as the buildings are erected to ensure that all details are properly incorporated.
- Art has a tremendously valuable role in animating architectural spaces – making them exciting and dynamic.

The council also stress that for future projects the orientation of and relationship between the internal and external areas should receive high consideration. They wish to maximise potential for learning and teaching outdoors in fair weather, feeling it will be necessary in the future to develop external planning which makes allowances for hard and soft landscaped formal playing areas, as well as areas of natural and constructed landscape to benefit exploration.

The Dalry project includes an evaluation programme after five years' use, designed to inform and extend future developments. Given the project's innovative and experimental nature, as well as its potential impact on the wider field of educational design, it is important to study the long-term uses and effects of the design and to share them with a larger audience.

*For more information, visit [www.scotland.gov.uk/Topics/Education/Schools/Buildings/CaseStudies](http://www.scotland.gov.uk/Topics/Education/Schools/Buildings/CaseStudies) or contact:*

*Malcolm Summers*

*School Estate Team*

*Schools Directorate*

*Scottish Government*

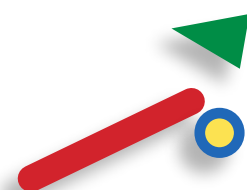
*2D – South, Victoria Quay*

*Edinburgh*

*EH6 6QQ, United Kingdom*

*Tel.: 44 131 244 0373*

*E-mail: [Malcolm.Summers@scotland.gsi.gov.uk](mailto:Malcolm.Summers@scotland.gsi.gov.uk)*





# ORGANISATION FOR ECONOMIC CO-OPERATION AND DEVELOPMENT

The OECD is a unique forum where the governments of 30 democracies work together to address the economic, social and environmental challenges of globalisation. The OECD is also at the forefront of efforts to understand and to help governments respond to new developments and concerns, such as corporate governance, the information economy and the challenges of an ageing population. The Organisation provides a setting where governments can compare policy experiences, seek answers to common problems, identify good practice and work to co-ordinate domestic and international policies.

The OECD member countries are: Australia, Austria, Belgium, Canada, the Czech Republic, Denmark, Finland, France, Germany, Greece, Hungary, Iceland, Ireland, Italy, Japan, Korea, Luxembourg, Mexico, the Netherlands, New Zealand, Norway, Poland, Portugal, the Slovak Republic, Spain, Sweden, Switzerland, Turkey, the United Kingdom and the United States. The Commission of the European Communities takes part in the work of the OECD.

OECD Publishing disseminates widely the results of the Organisation's statistics gathering and research on economic, social and environmental issues, as well as the conventions, guidelines and standards agreed by its members.

*This work is published on the responsibility of the Secretary-General of the OECD. The opinions expressed and arguments employed herein do not necessarily reflect the official views of the Organisation or of the governments of its member countries.*

Corrigenda to OECD publications may be found on line at: [www.oecd.org/publishing/corrigenda](http://www.oecd.org/publishing/corrigenda).

© OECD 2008

---

OECD freely authorises the use, including the photocopy, of this material for private, non-commercial purposes. Permission to photocopy portions of this material for any public use or commercial purpose may be obtained from the Copyright Clearance Center (CCC) at [info@copyright.com](mailto:info@copyright.com) or the Centre français d'exploitation du droit de copie (CFC) [contact@cfcopies.com](mailto:contact@cfcopies.com). All copies must retain the copyright and other proprietary notices in their original forms. All requests for other public or commercial uses of this material or for translation rights should be submitted to [rights@oecd.org](mailto:rights@oecd.org).

---