

TOTAL POPULATION

The size and growth of a country's population are both causes and effects of economic and social developments. The pace of population growth has slowed in all OECD countries.

Population projections, which give indications of likely changes in the future population size and structure, are a common demographic tool. They provide a basis for other statistical projections (e.g. service provision, employment) and as such, they are a very valuable tool for helping governments in their decision making.

Definition

Data refer to the resident population, that is, they are a measure of the population that usually lives in an area. For countries with overseas colonies, protectorates or other territorial possessions, their populations are generally excluded. Growth rates are the annual changes resulting from births, deaths and net migration during the year. Working age population is those aged 15 to 64.

Comparability

For most OECD countries, population data are based on regular, ten-yearly censuses, with estimates for intercensal years derived from administrative data. In several European countries, population estimates are based

entirely on administrative records. Population data are fairly comparable.

For some countries the population figures shown here differ from those used for calculating GDP and other economic statistics on a per capita basis, although differences are normally small.

Population projections are taken from national sources where these are available, but for some countries they are based on United Nations or Eurostat projections; the projection for the world comes from the UN. All population projections require assumptions about future trends in life expectancy, fertility rates and migration. Often, a range of projections is produced using different assumptions about these future trends. The estimates shown here correspond to the median or central variant, that is; there is an estimated 50 percent chance the population could be lower, and a 50 percent chance it could be higher.

It should be noted that in the case of Mexico, the population according to the Population and Household Census taken in 2010 was 112.3 million compared with the previous estimate of 108.4 million presented in the table. The time series with the results of the *Population and Housing Census for Mexico* is underway by the Ministry of Interior. As soon as data is available, it will be updated in the digital version of the OECD Factbook, available at: <http://dx.doi.org/10.1787/factbook-data-en>.

Overview

In 2010, OECD countries accounted for 18% of the world's population of 6.9 billion. China accounted for 19% and India for 18%. Within the OECD, in 2010, the United States accounted for 25% of the OECD total, followed by Japan (10%), Mexico (9%), Germany (7%) and Turkey (6%).

In the three years to 2010, growth rates above the OECD population average (0.6% per year) were recorded in Israel, Mexico and Turkey (high birth rate countries) and in Australia, Canada, Chile, Luxembourg, Norway, Sweden, Switzerland, the United Kingdom and the United States (high net immigration). New Zealand and Ireland also recorded population growth rates above the OECD total which can be attributed to both a birth rate equal to the replacement fertility rate (a total fertility rate of 2.1 children per woman) and a positive net migration rate.

In Hungary and Germany, populations declined mostly due to low birth rates. Growth rates were also negative in Estonia while they were very low, although still positive, in Japan, Poland, Portugal and the Slovak Republic. The population of OECD countries is expected to grow by less than 0.2% per year until 2050.

Sources

- For OECD member countries: national sources, United Nations and Eurostat.
- For Brazil, China, India, Indonesia, the Russian Federation and South Africa: United Nations, *World Population Prospects: The 2010 Revision*.

Further information

Analytical publications

- OECD (2011), *Doing Better for Families*, OECD Publishing.
- OECD (2011), *The Future of Families to 2030*, OECD Publishing.

Statistical publications

- OECD (2011), *Society at a Glance: OECD Social Indicators*, OECD Publishing.

Methodological publications

- OECD (2011), *Labour Force Statistics*, OECD Publishing.

Online databases

- OECD *Employment and Labour Market Statistics*.
- United Nations *World Population Prospects*.

Websites

- OECD Family Database, www.oecd.org/els/social/family/database.



Population levels

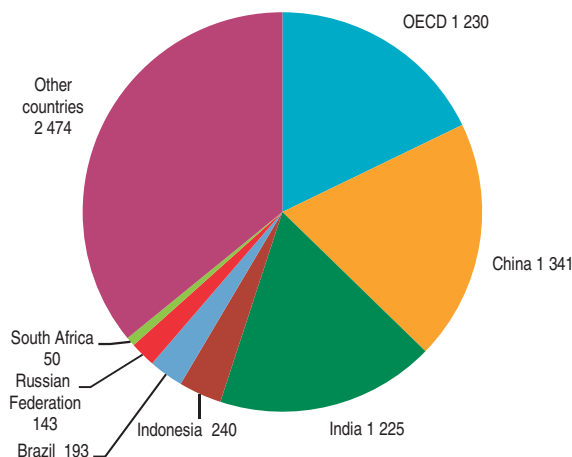
Thousands

	2001	2002	2003	2004	2005	2006	2007	2008	2009	2010	2011	2020	2050
Australia	19 413	19 651	19 895	20 127	20 395	20 698	21 015	21 499	21 955	22 298	22 618	25 288	33 959
Austria	8 042	8 082	8 121	8 172	8 228	8 269	8 301	8 337	8 365	8 390	8 421	8 724	9 360
Belgium	10 287	10 333	10 376	10 421	10 479	10 548	10 626	10 710	10 796	10 896	..	11 758	13 139
Canada	31 019	31 354	31 640	31 941	32 245	32 576	32 930	33 316	33 720	34 109	..	36 344	41 896
Chile	15 572	15 746	15 919	16 093	16 267	16 433	16 598	16 763	16 929	17 094	17 248	18 549	20 205
Czech Republic	10 236	10 205	10 207	10 216	10 236	10 269	10 334	10 424	10 487	10 520	..	10 287	9 457
Denmark	5 359	5 376	5 391	5 405	5 419	5 437	5 461	5 494	5 523	5 548	..	5 582	5 621
Estonia	1 364	1 359	1 354	1 349	1 346	1 344	1 342	1 341	1 340	1 340	..	1 328	1 250
Finland	5 188	5 201	5 213	5 228	5 246	5 266	5 289	5 313	5 339	5 363	5 388	5 636	6 090
France	59 476	59 894	60 304	60 734	61 182	61 597	61 965	62 300	62 628	62 959	63 294	66 098	72 341
Germany	82 350	82 488	82 534	82 516	82 469	82 376	82 266	82 110	81 902	81 777	..	79 914	69 412
Greece	10 950	10 988	11 024	11 062	11 104	11 148	11 193	11 237	11 283	11 308	..	11 426	10 605
Hungary	10 188	10 159	10 130	10 107	10 107	10 071	10 056	10 038	10 023	10 000	..	9 856	8 718
Iceland	285	288	289	293	296	304	311	319	319	318	319	345	420
Ireland	3 866	3 932	3 997	4 070	4 160	4 260	4 357	4 426	4 459	4 474	..	4 774	5 482
Israel	6 439	6 570	6 690	6 809	6 930	7 054	7 180	7 309	7 486	7 624	..	9 022	..
Italy	56 977	57 157	57 605	58 175	58 607	58 942	59 375	59 832	60 193	60 483	..	59 001	55 710
Japan	127 291	127 435	127 619	127 687	127 768	127 770	127 771	127 692	127 510	128 057	127 799	124 100	97 076
Korea	47 357	47 622	47 859	48 039	48 138	48 372	48 598	48 949	49 182	49 410	49 779	51 436	48 121
Luxembourg	442	446	452	458	465	473	480	489	498	507	..	523	644
Mexico	99 716	100 909	102 000	103 002	103 947	104 874	105 791	106 683	107 551	108 396	109 220	115 762	121 856
Netherlands	16 046	16 149	16 225	16 282	16 320	16 346	16 382	16 446	16 530	16 615	..	17 240	17 343
New Zealand	3 881	3 949	4 027	4 088	4 134	4 185	4 228	4 269	4 316	4 368	4 405	4 565	5 046
Norway	4 514	4 538	4 565	4 592	4 623	4 661	4 709	4 768	4 829	4 889	4 953	5 061	5 854
Poland	38 251	38 232	38 195	38 180	38 161	38 132	38 116	38 116	38 153	38 187	..	37 830	34 543
Portugal	10 293	10 368	10 441	10 502	10 549	10 584	10 608	10 622	10 632	10 637	..	10 832	10 674
Slovak Republic	5 379	5 379	5 380	5 382	5 387	5 391	5 397	5 407	5 419	5 430	..	5 417	4 880
Slovenia	1 992	1 995	1 996	1 997	2 000	2 007	2 010	2 021	2 040	2 049	..	2 066	1 994
Spain	40 720	41 314	42 005	42 692	43 398	44 116	44 879	45 556	45 909	46 071	..	45 568	42 703
Sweden	8 896	8 925	8 958	8 994	9 030	9 081	9 148	9 220	9 299	9 378	9 449	9 976	10 726
Switzerland	7 227	7 285	7 339	7 390	7 437	7 484	7 551	7 648	7 744	7 822	..	8 379	8 981
Turkey	65 133	66 008	66 873	67 723	68 566	69 395	70 215	71 079	71 897	72 698	..	80 257	96 496
United Kingdom	59 108	59 326	59 566	59 031	59 408	59 751	60 137	60 540	60 927	61 344	61 761	66 754	76 959
United States	284 969	287 625	290 108	292 805	295 517	298 380	301 231	304 094	306 772	309 330	311 592	341 387	439 010
EU 27	484 216	485 641	487 722	489 966	492 173	494 251	496 489	498 686	500 395	501 792	503 279	514 913	523 804
OECD	1 158 225	1 166 286	1 174 295	1 181 563	1 189 545	1 197 595	1 205 851	1 214 366	1 221 954	1 229 690	1 231 746	1 291 087	1 393 722
Brazil	173 808	176 304	178 741	181 106	183 383	185 564	187 642	189 613	191 481	193 253	194 933	207 143	215 288
China	1 277 904	1 285 934	1 293 397	1 300 552	1 307 594	1 314 581	1 321 482	1 328 276	1 334 909	1 341 335	1 348 010	1 387 792	1 295 604
India	1 071 374	1 088 694	1 105 886	1 122 991	1 140 043	1 157 039	1 173 972	1 190 864	1 207 740	1 224 614	1 241 948	1 386 909	1 692 008
Indonesia	216 204	219 026	221 839	224 607	227 303	229 919	232 462	234 951	237 415	239 871	242 206	262 570	293 456
Russian Federation	146 162	145 520	144 881	144 307	143 843	143 510	143 295	143 163	143 064	142 958	142 823	141 022	126 188
South Africa	45 390	46 015	46 631	47 227	47 793	48 331	48 842	49 319	49 752	50 133	50 385	52 573	56 757
World	6 200 003	6 276 722	6 353 196	6 429 758	6 506 649	6 583 959	6 661 638	6 739 611	6 817 737	6 895 889	6 975 114	7 656 528	9 306 128

StatLink <http://dx.doi.org/10.1787/888932705843>

World population

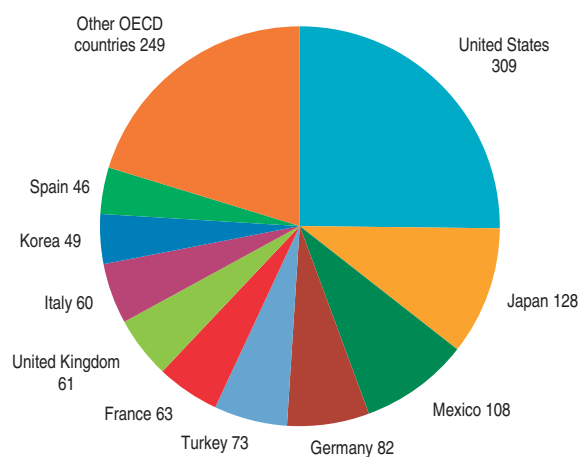
Millions, 2010



StatLink <http://dx.doi.org/10.1787/888932705862>

OECD population

Millions, 2010



StatLink <http://dx.doi.org/10.1787/888932705900>

TOTAL POPULATION

Population growth rates

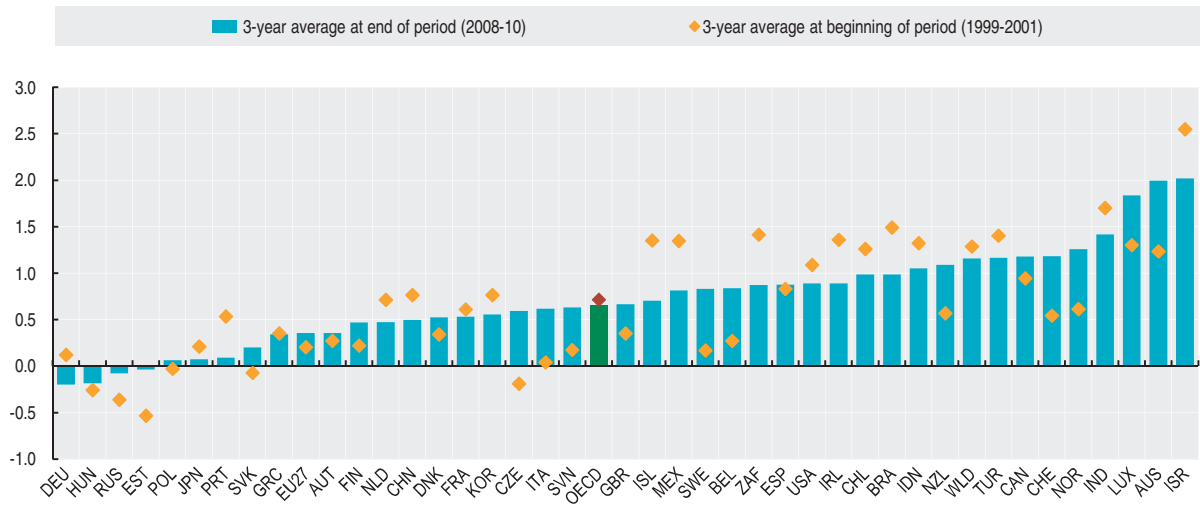
Annual growth in percentage


	1999	2000	2001	2002	2003	2004	2005	2006	2007	2008	2009	2010	2011
Australia	1.15	1.20	1.36	1.23	1.24	1.17	1.33	1.49	1.53	2.30	2.12	1.56	1.44
Austria	0.19	0.24	0.38	0.49	0.49	0.62	0.68	0.50	0.39	0.44	0.34	0.29	0.37
Belgium	0.23	0.24	0.34	0.45	0.42	0.43	0.55	0.66	0.74	0.79	0.81	0.92	..
Canada	0.82	0.94	1.09	1.08	0.91	0.95	0.95	1.03	1.09	1.17	1.21	1.15	..
Chile	1.34	1.32	1.13	1.12	1.10	1.09	1.08	1.02	1.01	1.00	0.99	0.98	0.90
Czech Republic	-0.10	-0.11	-0.35	-0.31	0.02	0.08	0.19	0.33	0.63	0.87	0.60	0.31	..
Denmark	0.33	0.33	0.36	0.32	0.27	0.26	0.28	0.33	0.44	0.59	0.54	0.45	..
Estonia	-0.76	-0.45	-0.40	-0.40	-0.37	-0.32	-0.24	-0.19	-0.14	-0.07	-0.03	-0.01	..
Finland	0.23	0.21	0.23	0.24	0.24	0.29	0.34	0.38	0.43	0.47	0.48	0.46	0.46
France	0.48	0.66	0.70	0.70	0.68	0.71	0.74	0.68	0.60	0.54	0.53	0.53	0.53
Germany	0.06	0.14	0.17	0.17	0.06	-0.02	-0.06	-0.11	-0.13	-0.19	-0.25	-0.15	..
Greece	0.44	0.32	0.30	0.34	0.33	0.35	0.38	0.40	0.40	0.40	0.41	0.22	..
Hungary	-0.28	-0.26	-0.23	-0.28	-0.29	-0.22	-0.20	-0.16	-0.15	-0.17	-0.15	-0.23	..
Iceland	1.24	1.43	1.39	0.88	0.60	1.15	1.12	2.86	2.32	2.56	-0.03	-0.39	0.32
Ireland	1.13	1.34	1.60	1.70	1.64	1.85	2.20	2.41	2.27	1.58	0.75	0.35	..
Israel	2.59	2.68	2.38	2.03	1.82	1.78	1.78	1.78	1.79	1.79	2.42	1.84	..
Italy	0.02	0.05	0.06	0.32	0.78	0.99	0.74	0.57	0.74	0.77	0.60	0.48	..
Japan	0.16	0.19	0.29	0.11	0.14	0.05	0.06	0.00	0.00	-0.06	-0.14	0.43	-0.20
Korea	0.71	0.84	0.74	0.56	0.50	0.38	0.21	0.49	0.47	0.72	0.48	0.46	0.75
Luxembourg	1.36	1.35	1.20	1.05	1.22	1.43	1.54	1.61	1.56	1.80	1.87	1.84	..
Mexico	1.38	1.36	1.30	1.20	1.08	0.98	0.92	0.89	0.87	0.84	0.81	0.79	0.76
Netherlands	0.67	0.72	0.76	0.64	0.47	0.35	0.23	0.16	0.22	0.39	0.52	0.51	..
New Zealand	0.53	0.59	0.59	1.75	1.99	1.50	1.14	1.23	1.04	0.96	1.10	1.20	0.85
Norway	0.69	0.65	0.51	0.54	0.59	0.59	0.68	0.81	1.04	1.25	1.27	1.25	1.30
Poland	-0.03	-0.04	-0.01	-0.05	-0.10	-0.04	-0.05	-0.08	-0.04	0.00	0.10	0.09	..
Portugal	0.42	0.53	0.66	0.73	0.70	0.58	0.45	0.33	0.23	0.13	0.09	0.05	..
Slovak Republic	0.10	-0.14	-0.18	0.00	0.01	0.05	0.08	0.08	0.11	0.17	0.22	0.21	..
Slovenia	0.07	0.30	0.16	0.12	0.06	0.06	0.17	0.32	0.17	0.55	0.91	0.44	..
Spain	0.52	0.84	1.14	1.46	1.67	1.64	1.65	1.66	1.73	1.51	0.77	0.35	..
Sweden	0.08	0.16	0.27	0.33	0.37	0.39	0.40	0.56	0.74	0.78	0.86	0.86	0.76
Switzerland	0.48	0.56	0.59	0.80	0.74	0.69	0.64	0.63	0.90	1.28	1.26	1.01	..
Turkey	1.44	1.40	1.37	1.34	1.31	1.27	1.24	1.21	1.18	1.23	1.15	1.11	..
United Kingdom	0.33	0.36	0.37	0.37	0.41	-0.90	0.64	0.58	0.65	0.67	0.64	0.68	0.68
United States	1.15	1.12	0.99	0.93	0.86	0.93	0.93	0.97	0.96	0.95	0.88	0.83	0.73
EU 27	0.19	0.23	0.19	0.29	0.43	0.46	0.45	0.42	0.45	0.44	0.34	0.28	0.30
OECD	0.69	0.73	0.72	0.70	0.69	0.62	0.68	0.68	0.69	0.71	0.62	0.63	0.17
Brazil	1.50	1.50	1.48	1.44	1.38	1.32	1.26	1.19	1.12	1.05	0.99	0.93	0.87
China	0.84	0.77	0.69	0.63	0.58	0.55	0.54	0.53	0.52	0.51	0.50	0.48	0.50
India	1.75	1.70	1.66	1.62	1.58	1.55	1.52	1.49	1.46	1.44	1.42	1.40	1.42
Indonesia	1.33	1.32	1.32	1.31	1.28	1.25	1.20	1.15	1.11	1.07	1.05	1.03	0.97
Russian Federation	-0.31	-0.36	-0.41	-0.44	-0.44	-0.40	-0.32	-0.23	-0.15	-0.09	-0.07	-0.07	-0.09
South Africa	1.43	1.41	1.41	1.38	1.34	1.28	1.20	1.13	1.06	0.98	0.88	0.77	0.50
World	1.32	1.29	1.26	1.24	1.22	1.21	1.20	1.19	1.18	1.17	1.16	1.15	1.15

StatLink  <http://dx.doi.org/10.1787/888932705881>

Population growth rates

Average annual growth in percentage



StatLink  <http://dx.doi.org/10.1787/888932705938>



TOTAL POPULATION

Working age population

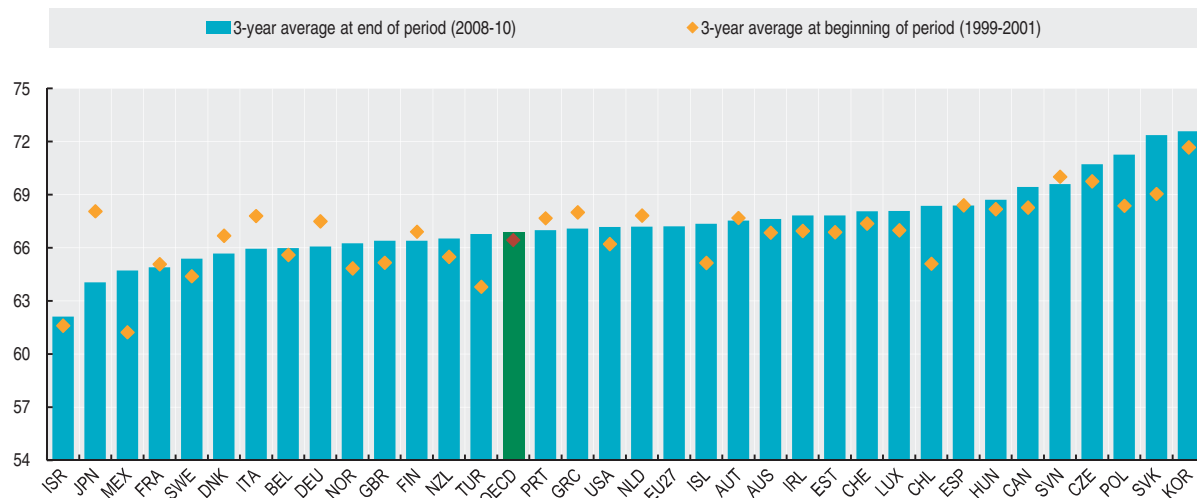
As a percentage of total population

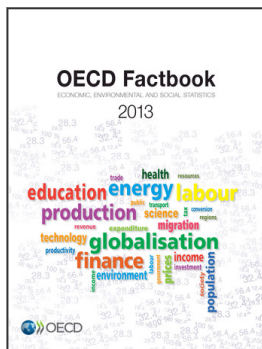
	1999	2000	2001	2002	2003	2004	2005	2006	2007	2008	2009	2010	2011
Australia	66.8	66.9	66.9	67.0	67.2	67.3	67.3	67.4	67.5	67.6	67.7	67.6	67.4
Austria	67.6	67.8	67.7	67.9	68.1	68.1	67.8	67.6	67.5	67.5	67.5	67.6	67.7
Belgium	65.7	65.6	65.6	65.6	65.6	65.6	65.6	65.8	66.0	66.1	66.0	65.9	..
Canada	68.1	68.3	68.5	68.7	68.8	69.0	69.2	69.4	69.5	69.5	69.4	69.4	..
Chile	64.8	65.0	65.5	65.9	66.3	66.7	67.1	67.5	67.8	68.1	68.4	68.7	68.7
Czech Republic	69.4	69.8	70.1	70.4	70.7	70.9	71.1	71.2	71.2	71.1	70.8	70.3	..
Denmark	66.8	66.7	66.5	66.4	66.3	66.2	66.1	66.1	66.0	65.9	65.7	65.4	..
Estonia	66.6	66.9	67.2	67.4	67.7	67.9	68.1	68.1	68.0	67.9	67.9	67.7	..
Finland	66.9	66.9	66.9	66.9	66.8	66.7	66.7	66.6	66.5	66.6	66.5	66.2	65.7
France	65.1	65.1	65.0	65.0	65.0	65.1	65.1	65.1	65.1	65.0	64.9	64.8	..
Germany	67.8	67.5	67.2	67.0	66.7	66.4	66.9	66.6	66.3	66.2	66.1	66.0	..
Greece	67.9	68.0	68.0	67.9	67.8	67.6	67.3	67.1	67.1	67.0	67.1
Hungary	68.0	68.2	68.3	68.5	68.6	68.7	68.8	68.8	68.8	68.8	68.7	68.7	..
Iceland	65.1	65.1	65.3	65.3	65.5	65.8	66.2	66.9	67.4	67.8	67.4	66.9	66.7
Ireland	66.6	67.0	67.3	67.8	67.9	68.0	68.3	68.7	68.8	68.5	67.9	67.2	..
Israel	61.5	61.6	61.7	61.8	61.7	61.7	61.7	61.8	61.8	61.9	62.3	62.2	..
Italy	68.0	67.8	67.6	67.5	67.5	66.7	66.5	66.3	66.1	66.0	65.9	65.9	..
Japan	68.5	68.1	67.7	67.3	66.9	66.6	66.1	65.5	65.0	64.5	63.9	63.8	63.6
Korea	71.7	71.7	71.6	71.6	71.6	71.7	71.7	71.9	72.1	72.3	72.6	72.8	73.0
Luxembourg	66.8	67.0	67.2	67.1	67.1	67.3	67.3	67.5	67.6	67.9	68.1	68.3	..
Mexico	60.9	61.2	61.6	62.0	62.5	63.0	63.5	64.0	64.5	65.0	65.5	63.6	..
Netherlands	67.9	67.8	67.8	67.7	67.7	67.6	67.5	67.4	67.4	67.3	67.2	67.0	..
New Zealand	65.5	65.5	65.5	65.8	66.1	66.3	66.4	66.5	66.5	66.6	66.5	66.5	66.4
Norway	64.7	64.8	65.0	65.1	65.3	65.5	65.6	65.9	66.1	66.3	66.3	66.2	66.1
Poland	68.0	68.3	68.8	69.2	69.6	70.0	70.3	70.6	70.9	71.2	71.3	71.3	..
Portugal	67.7	67.7	67.6	67.5	67.5	67.4	67.3	67.3	67.3	67.2	67.0	66.8	..
Slovak Republic	68.5	69.1	69.6	70.1	70.6	71.1	71.5	71.8	72.1	72.3	72.4	72.3	..
Slovenia	69.7	70.1	70.3	70.2	70.4	70.5	70.1	70.1	70.1	70.0	69.4	69.4	..
Spain	68.4	68.4	68.5	68.5	68.6	68.7	68.8	68.8	68.8	68.7	68.4	68.0	..
Sweden	64.2	64.3	64.7	64.7	64.9	65.1	65.3	65.5	65.7	65.6	65.4	65.1	64.7
Switzerland	67.3	67.3	67.5	67.6	67.8	67.9	68.0	68.0	68.1	68.1	68.1	68.0	..
Turkey	63.4	63.8	64.2	64.6	65.1	65.4	65.7	66.0	66.2	66.5	66.8	67.1	..
United Kingdom	65.0	65.2	65.4	65.5	65.7	66.1	66.3	66.6	66.7	66.3	66.5	66.4	66.2
United States	66.0	66.2	66.4	66.6	66.7	66.9	67.1	67.3	67.3	67.2	67.2	67.1	67.1
EU 27	..	68.5	68.4	68.2	68.2	68.2	68.3	67.4	67.4	67.3	67.2	67.1	66.9
OECD	66.4	66.4	66.5	66.6	66.7	66.7	66.8	66.9	66.9	66.9	66.9
Brazil
China
India
Indonesia
Russian Federation
South Africa
World

StatLink <http://dx.doi.org/10.1787/888932705919>

Working age population

As a percentage of total population

StatLink <http://dx.doi.org/10.1787/888932705957>



From:
OECD Factbook 2013
Economic, Environmental and Social Statistics

Access the complete publication at:
<https://doi.org/10.1787/factbook-2013-en>

Please cite this chapter as:

OECD (2013), "Total population", in *OECD Factbook 2013: Economic, Environmental and Social Statistics*, OECD Publishing, Paris.

DOI: <https://doi.org/10.1787/factbook-2013-1-en>

This work is published under the responsibility of the Secretary-General of the OECD. The opinions expressed and arguments employed herein do not necessarily reflect the official views of OECD member countries.

This document and any map included herein are without prejudice to the status of or sovereignty over any territory, to the delimitation of international frontiers and boundaries and to the name of any territory, city or area.

You can copy, download or print OECD content for your own use, and you can include excerpts from OECD publications, databases and multimedia products in your own documents, presentations, blogs, websites and teaching materials, provided that suitable acknowledgment of OECD as source and copyright owner is given. All requests for public or commercial use and translation rights should be submitted to rights@oecd.org. Requests for permission to photocopy portions of this material for public or commercial use shall be addressed directly to the Copyright Clearance Center (CCC) at info@copyright.com or the Centre français d'exploitation du droit de copie (CFC) at contact@cfcopies.com.